

PRODUCT INFORMATION PACKET

Model No: 145TBWD5335
Catalog No: N349
2,1800,145TC,TEFC,1/60/115/208/230
Paint Free



Regal and Marathon are trademarks of Regal Beloit Corporation or one of its affiliated companies.
©2018 Regal Beloit Corporation, All Rights Reserved. MC017097E





Nameplate Specifications

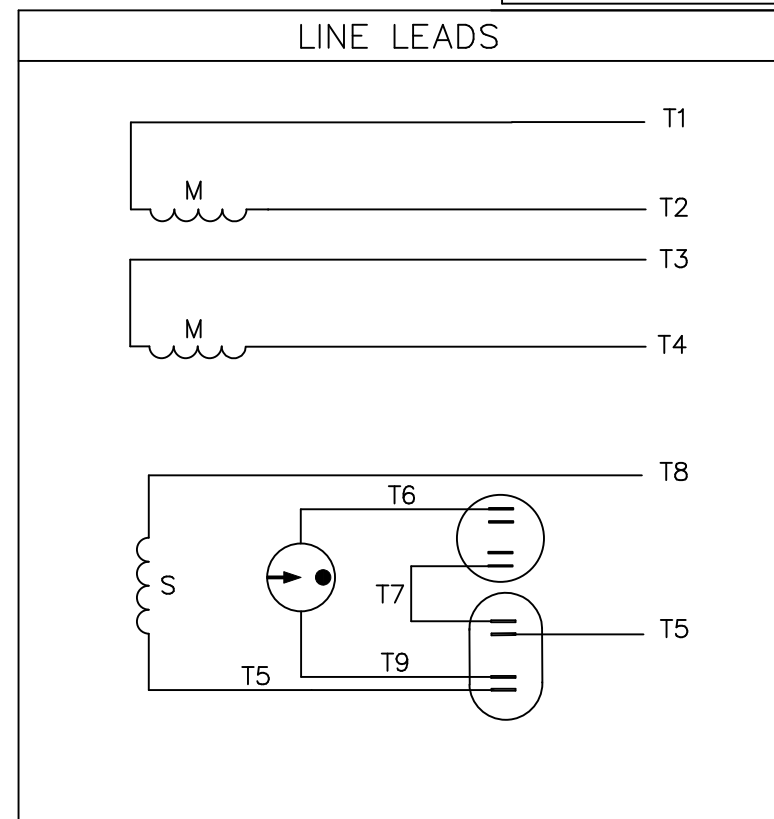
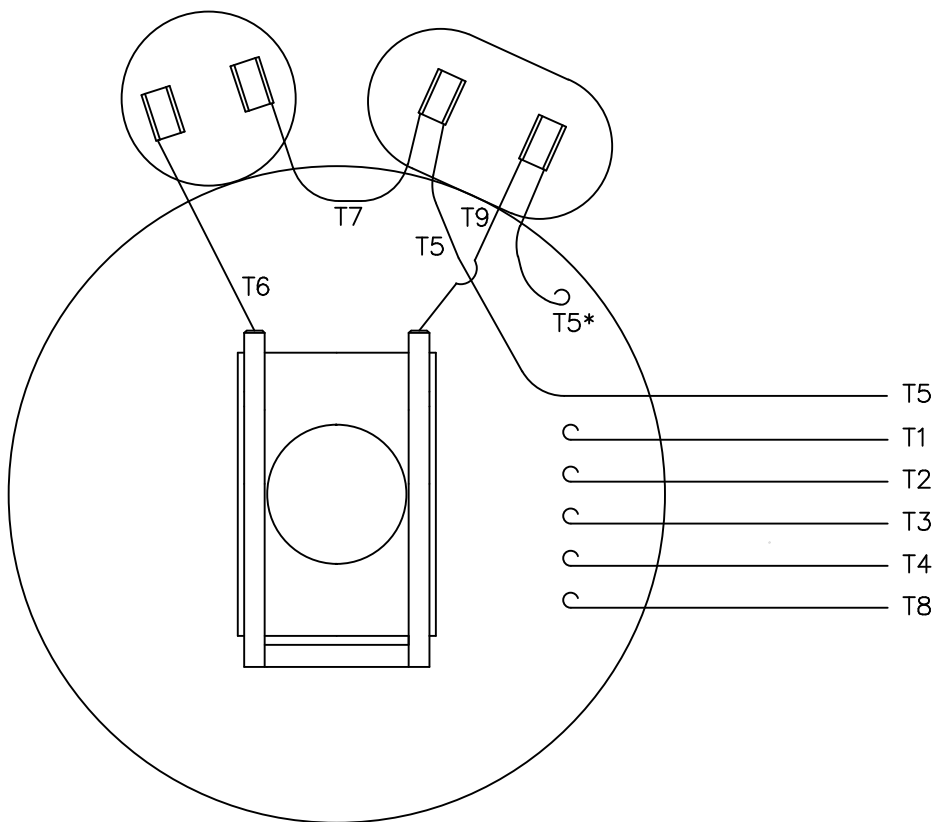
| | | | |
|----------------------------|------------------------------------|------------------------|-------------------|
| Output HP | 2 Hp | Output KW | 1.5 kW |
| Frequency | 60 Hz | Voltage | 115/230 V |
| Current | 16.4/8.2 A | Speed | 1725 rpm |
| Service Factor | 1.15 | Phase | 1 |
| Efficiency | 74 % | Duty | Continuous |
| Insulation Class | F | Design Code | N |
| KVA Code | J | Frame | 145TC |
| Enclosure | Totally Enclosed Fan Cooled | Overload Protector | No |
| Ambient Temperature | 40 °C | Drive End Bearing Size | 6205 |
| Opp Drive End Bearing Size | 6203 | UL | Recognized |
| CSA | Y | CE | Y |
| IP Code | 55 | | |

Technical Specifications

| | | | |
|-----------------------|--------------------------------------|-----------------------|-----------------------------------|
| Electrical Type | Capacitor Start Capacitor Run | Starting Method | Across The Line |
| Poles | 4 | Rotation | Selective Counterclockwise |
| Mounting | Rigid base | Motor Orientation | HORIZONTAL |
| Drive End Bearing | BALL | Opp Drive End Bearing | BALL |
| Frame Material | Stainless Steel | Shaft Type | T |
| Overall Length | 14.00 in | Frame Length | 9.00 in |
| Shaft Diameter | 0.875 in | Shaft Extension | 2.24 in |
| Assembly/Box Mounting | F1 ONLY | | |
| Outline Drawing | 16999900 | Connection Diagram | 005054.01 |

This is an uncontrolled document once printed or downloaded and is subject to change without notice. Date Created: 10/30/2018

VIEW FROM OUTSIDE OF MOTOR AT SWITCH END.



| | ROTATION FACING LEAD END | L1 | L2 | JOIN |
|--------------|--------------------------------|-------------|-------------|-------------|
| HIGH VOLT | C.C.W. | T1 | T4 T5 | T2,T3 T8 |
| | C.W. | T1 | T4 T8 | T2,T3 T5 |
| LOW VOLT | C.C.W. | T1 T3,T8 | T2,T4 T5 | |
| | C.W. | T1,T3 T5 | T2,T4 T8 | |

* THIS LEAD MAY BE WHITE

| | | TOLERANCES UNLESS SPECIFIED | | LEESON ELECTRIC MOTORS GEARMOTORS AND DRIVES | | DRAWN JRW 09/27/74 | | | |
|--|-----------------------------------|--------------------------------|----------|--|--------------|---|--------------|-------------|------|
| | | DEC. | INCHES | | | CHK | TEM | | |
| | | .X | ±.1 | | | APPD | 10/11/74 | | |
| 11 | ALTERNATE T5 LEAD MARKING WAS RED | RLW | 8/6/02 | .XX | ±.01 | TITLE | SCALE 1=1 | | |
| 10 | ADDED ALTERNATE T5 LEAD MARKING | RLW | 6/5/02 | KH | .XXX ±.005 | EXT. WIRING DIAGRAM TYPE "K" W/O PROTECTOR | REF A-005053 | | |
| 09 | REDRAWN TO CAD | DBT | 05/28/97 | | .XXXX ±.0005 | MAT'L. DECAL-004012 | FMF W-K6343 | | |
| NO. | REVISION | BY & DATE | CHK | ANG | ±1/2' | FINISH | PREV | | |
| THIS DRAWING IN DESIGN AND DETAIL IS OUR PROPERTY AND MUST NOT BE USED EXCEPT IN CONNECTION WITH OUR WORK ALL RIGHTS OF DESIGN AND INVENTION ARE RESERVED THIS IS AN ELECTRONICALLY GENERATED DOCUMENT - DO NOT SCALE THIS PRINT | | | | RFP | CAD FILE | 00505401 | SIZE | DRAWING NO. | REV. |
| | | | | DIST | BRF-NLV | | A | 005054-01 | 11 |